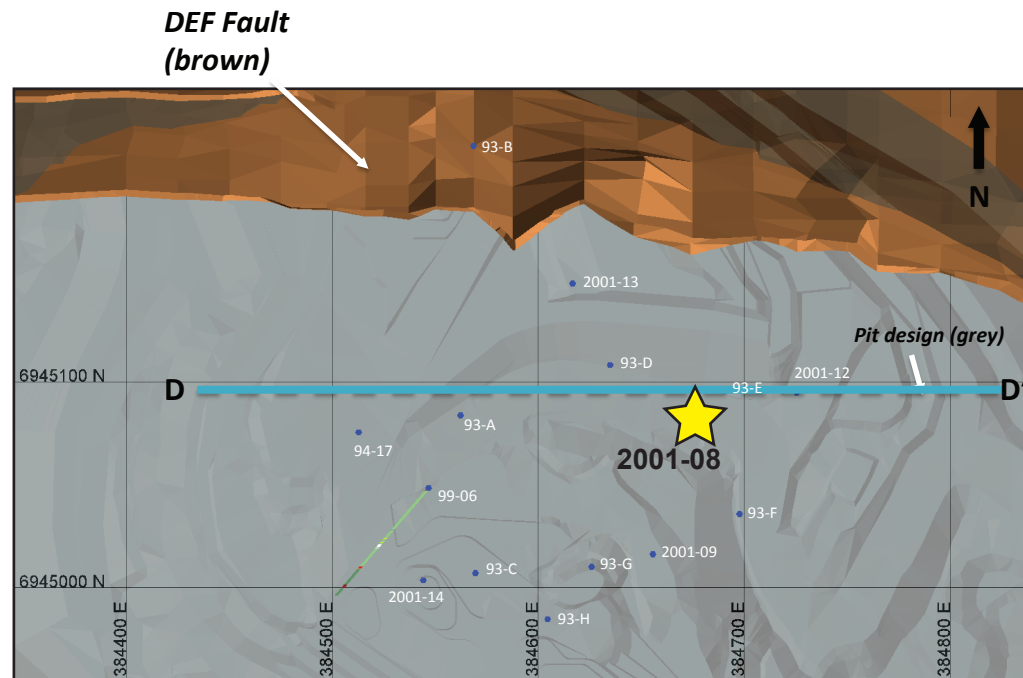


Minto deposit (Yukon MINFILE 115I 021, 022)

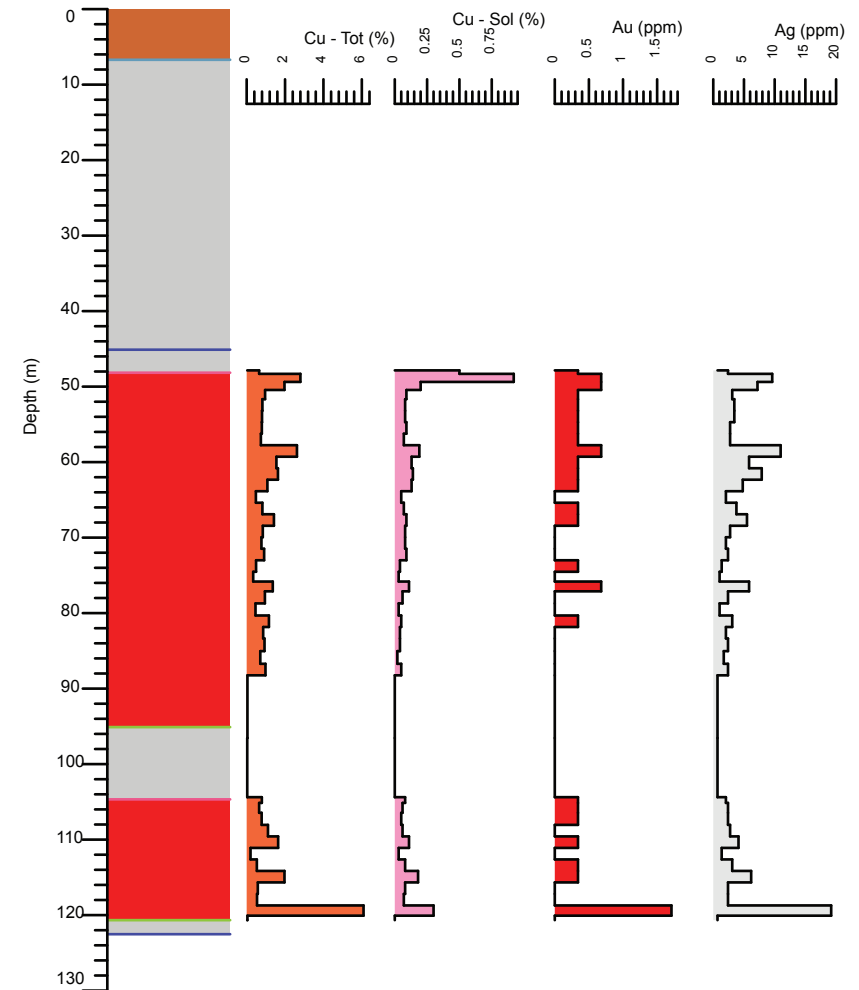
Drill Hole: 2001-08, Minto Main deposit

Area	Hole No.	Azimuth	Dip	Length (m)	Collar coordinates (NAD83, Zn 8)
Minto Main	2001-08	0	-90	122.53	384675mE, 6945082mN



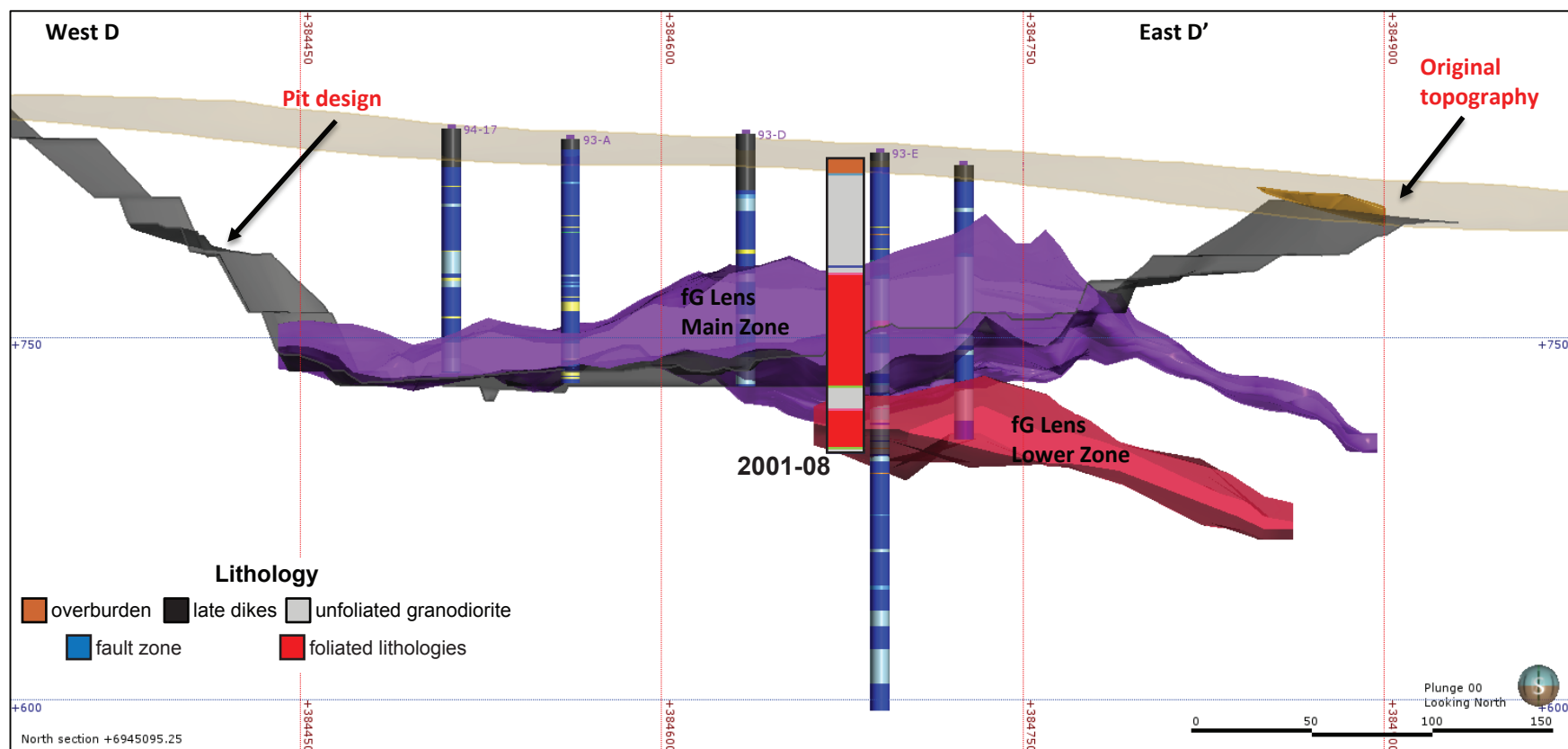
Above: Orthophoto of Minto area. Collar location of 2001-08 shown by yellow star, blue circles show collar locations of other drill holes in YGS collection.

Right: Simplified strip log with selected assays.



Lithology

- overburden
- late dikes
- unfoliated granodiorite
- fault zone
- foliated lithologies



Above: Simplified vertical east-west cross-section through the Minto Main pit.

Right: Selected assays through Minto Main lower zone. Cu - Tot = sulphide and non-sulphide copper, Cu-Sol = non-sulphide copper

Hole	From (m)	To (m)	Interval (m)	Sample	Cu (%)	Cu-Sol (%)	Au (ppm)	Ag (ppm)
2001-08	108.81	110.34	1.53	27261	1.11	0.06	0	2.74
2001-08	110.34	111.86	1.52	27262	1.64	0.11	0.34	4.11
2001-08	111.86	113.39	1.53	27263	0.2	0.03	0	1.37
2001-08	113.39	114.91	1.52	27264	0.53	0.08	0.34	3.09
2001-08	114.91	116.43	1.52	27265	1.97	0.18	0.34	6.17
2001-08	116.43	117.96	1.53	27266	0.58	0.08	0	2.4
2001-08	117.96	119.48	1.52	27267	0.54	0.07	0	2.4
2001-08	119.48	120.67	1.19	27268	6.09	0.3	1.71	19.2
2001-08	120.67	122.53	1.86	27270	0.04	0	0	0.69